



# CCHS – How to Log into.....

## My Maths

The MyMaths microsite is provided by our Mathematics Department which can be accessed from both school and home. It offers our students a fully interactive online learning resource for all year groups, right up to A-Level.



Students first have to log onto our dedicated area within MyMaths by entering our school username and password.

The CCHS password is available from the students' maths teacher

clacton

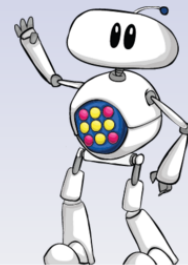
Username Password Go



- Home
- Primary
- Secondary
- Parents
- Subscribe
- Help
- News

### Welcome to MyMaths

Take a look around to find out more about the site



#### New features on MyMaths

New features on MyMaths We have updated MyMaths with the following features: Ability to set multiple tasks at once When...



#### Why and when we update MyMaths

You may be wondering how we decide when to update our resources, and what those updates should be. You'll be...



#### Scheduled updates

We will be making changes to the site between 6am-7am on Thursday 24th September. As a result, you may experience...



Each of our students has their own dedicated username and password to allow them access to the 'My portal' section of the site and the tasks, tests and homework set by their maths teacher.

These log in details are only available from students' maths teachers.



Assessment Manager

Help

Log out

Search... Search

My portal

Username Password Login ?

GCSE exams 2017

Library

Number

Algebra

Ratio and proportion

Geometry

Probability

Statistics

### Number

Filter: Everything

Place value

Multiples and factors

Add subtract whole

Times tables

Multiply divide whole

Negative numbers

Decimals

Fractions

G1 Counting 4

Sequences with whole numbers, decimals and negatives.

Lesson

Online homework

G1 Place value hundreds thousands

G1 Place value beyond 10000

G23 Inequalities and intervals